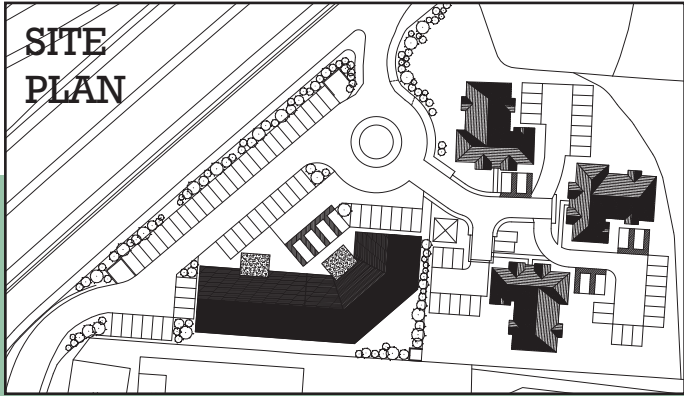
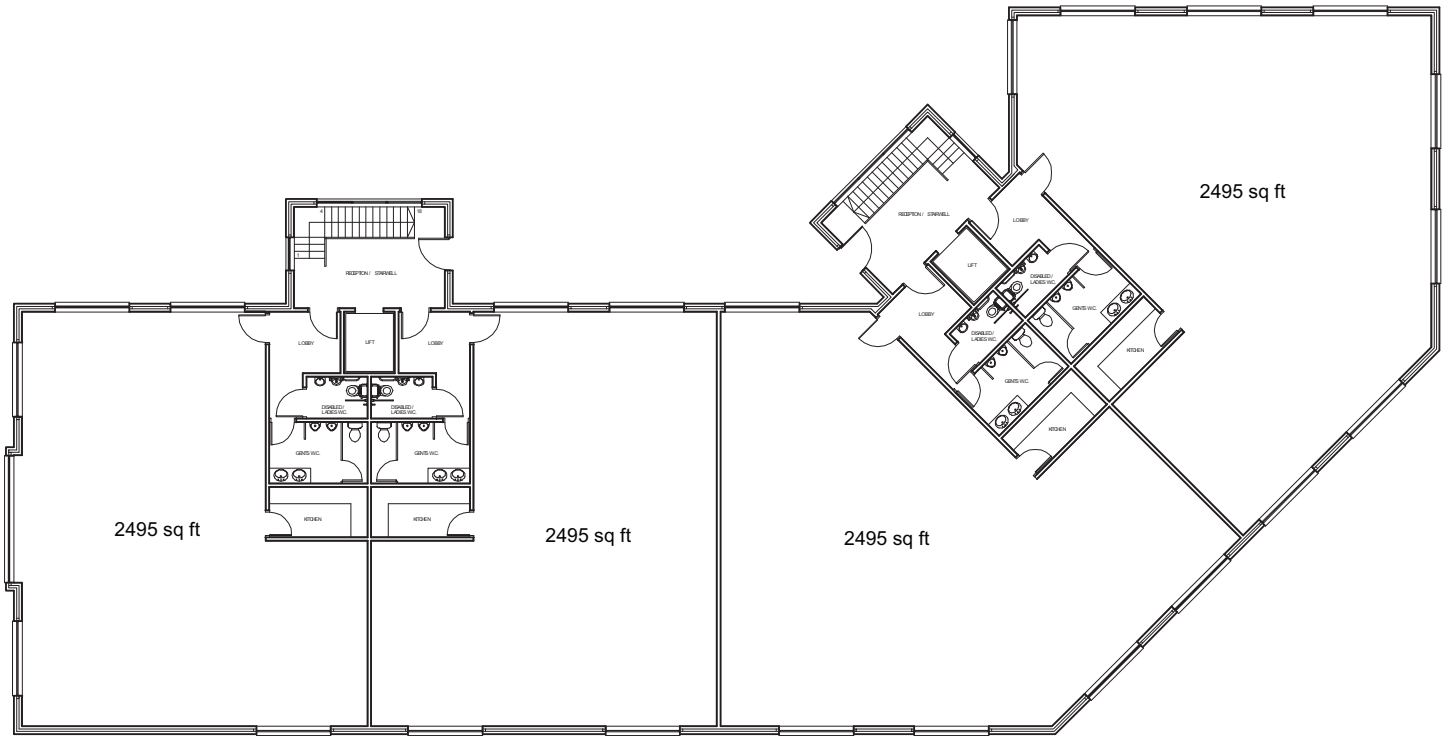


Ground Floor



The Links

Herne Bay 26,000 sq ft

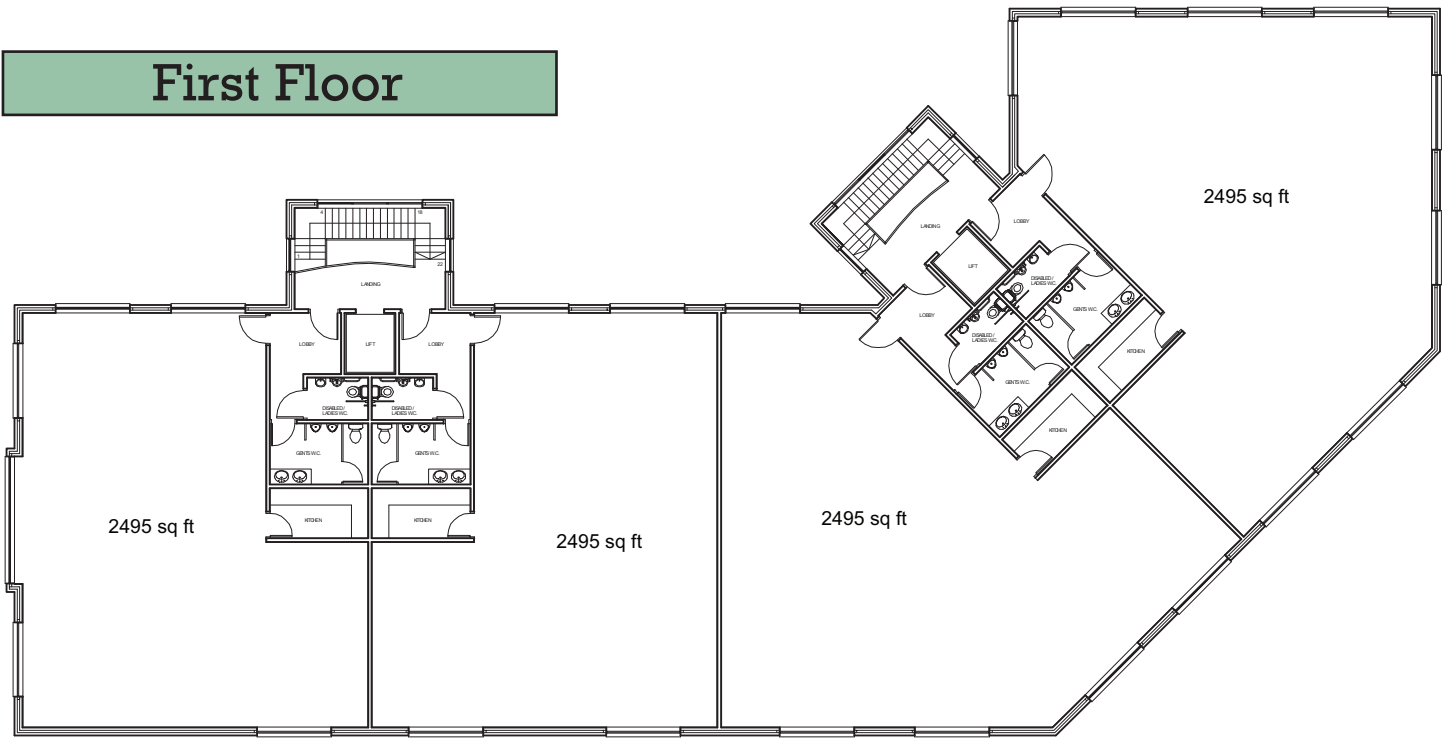


One of Kent's Best Located Office Developments.

Prime Locations with Excellent Motorway Connections.

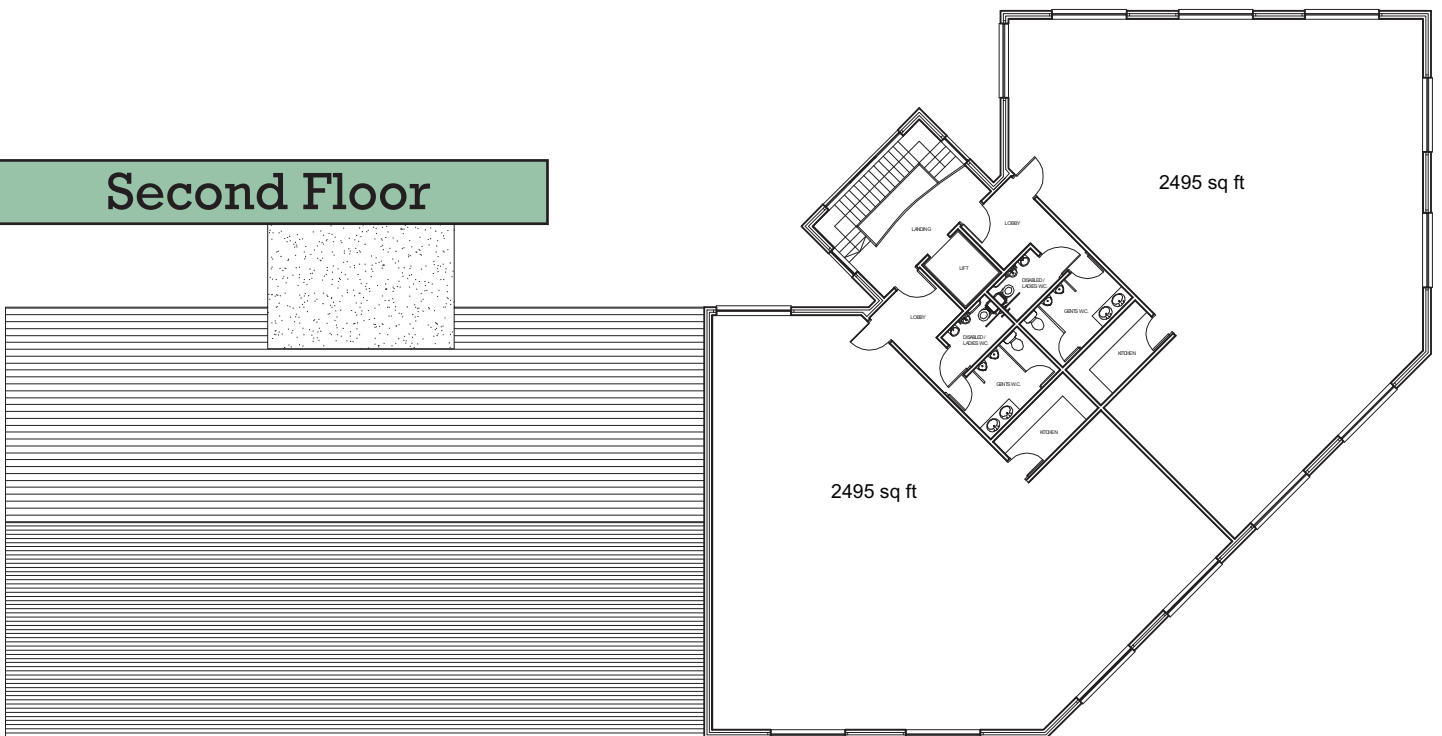


First Floor



George Wilson Holdings Ltd, as a substantial commercial property developer, is proud of its numerous projects in north and east Kent.

Second Floor



Po Box 70 Whitstable Kent CT5 3RG

phone 01227 263077 fax 01227 262707 mobile 07768 115879
email george.wilson@gwholdings.co.uk